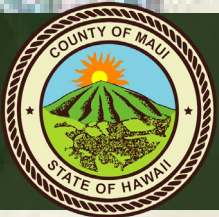


South Maui TOD Corridor Plan Funding Proposal



TOD Informational Briefing
September 4, 2020 | 9-11 a.m. via Zoom



TOD Planning Grant Objectives

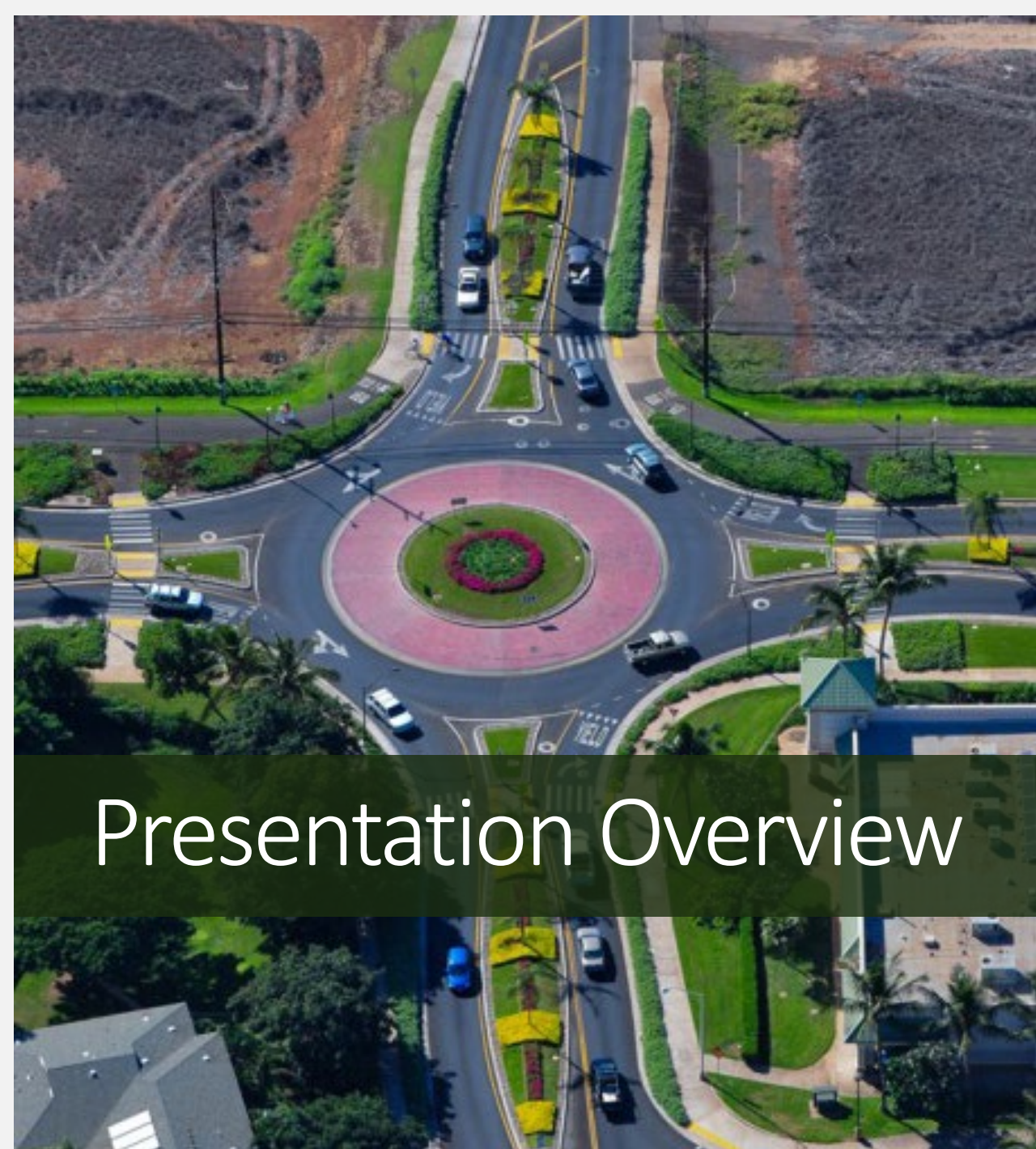
South Maui TOD Corridor
Location: ½ mile buffer
from Liloa Dr. and future
sections of Kihei North-
South Collector Rd. from
North Kihei to Wailea

4245.7 acres

6.8 miles

- Plan for completion of **Kihei North-South Collector Road** as bus transit corridor with adjacent multiuse path;
- Identify location for **South Maui bus transit hub**;
- Identify **infill development** opportunities near transit;
- **Improve transit opportunities** for residents, employees and visitors;
- **Optimize use of public lands** for housing and services;
- Identify locations for mobility hubs to **reduce carbon emissions.**





Presentation Overview

- Land Use
- Community Planning
- Housing
- Parks and Open Space
- Bus Transit
- Connectivity and Safer Streets
- Priority Areas

Photo credit: County of Maui

Land Use

- **State Urban District**
- **Existing uses:** Dense residential, condos, public and recreational uses, R&T park, resort area
- **Fast growth** due to available urbanized land, community planned
- **Optimize use of state properties:** Kihei High School, Lokelani Intermediate, Kihei Elementary, Kihei Boat ramp and KIRC boathouse site, Kihei Surfside lawn, Sarento's parking lot, 1.25 acres along SKR



Community Planning

- **Alignment with existing plans:** Maui Island Plan, Community Plan, Hele Mai Maui and Kihei Sub-Area Transportation Study
- **South Maui Community Plan** update starting
- **Land use designations** to support mixed use and density
- **Opportunities for infill** development and housing



Photo credit: Maui MPO

Housing

- 7,600 households in Kihei-Makena: 53% homeowners, 47% rent
- 45% of households pay more than 30% of income for housing
- 18% of households are overcrowded
- Housing and transportation affordability index 53%
- 439 existing affordable rental units in Kihei: Kenolio Apartments, Kaiwahine Village, Uwapo Road Apartments, Hale Mahaolu Ehiku, Hale Kihei



Photo credit: County of Maui



Affordable and Workforce Housing (Proposed)

- Liloa Hale – 150 units
- Hale Kaiola – 40 units
- Kaiaulu O Halelea – 64 units
- Hale O Pi'ikea – 90 units
- TOD corridor plan and North-South Collector Rd. would improve transit opportunities & enable future affordable housing



Photo credit: KCA



Parks and Open Space

- **Connect parks**, open space and residential areas with multiuse paths
- **Neighborhood parks** on corridor: Kenolio Park, Keonekai Park
- **South Maui Community Park**
- **Multiuse path** along North-South Collector Road is essentially a linear park
- Connect N-S corridor to **oceanfront parks**: Kalama Park, Kamaole I, II and III



Photo credit: Maui Now



Bus Transit

- **Existing Maui Bus service:** Kihei Islander and Kihei Villager
- **Short Range Transit Plan** – modified routes and additional route along N-S Collector Road
- **Possible bus transit hub** at Pi'ikea Avenue or Liloa Drive

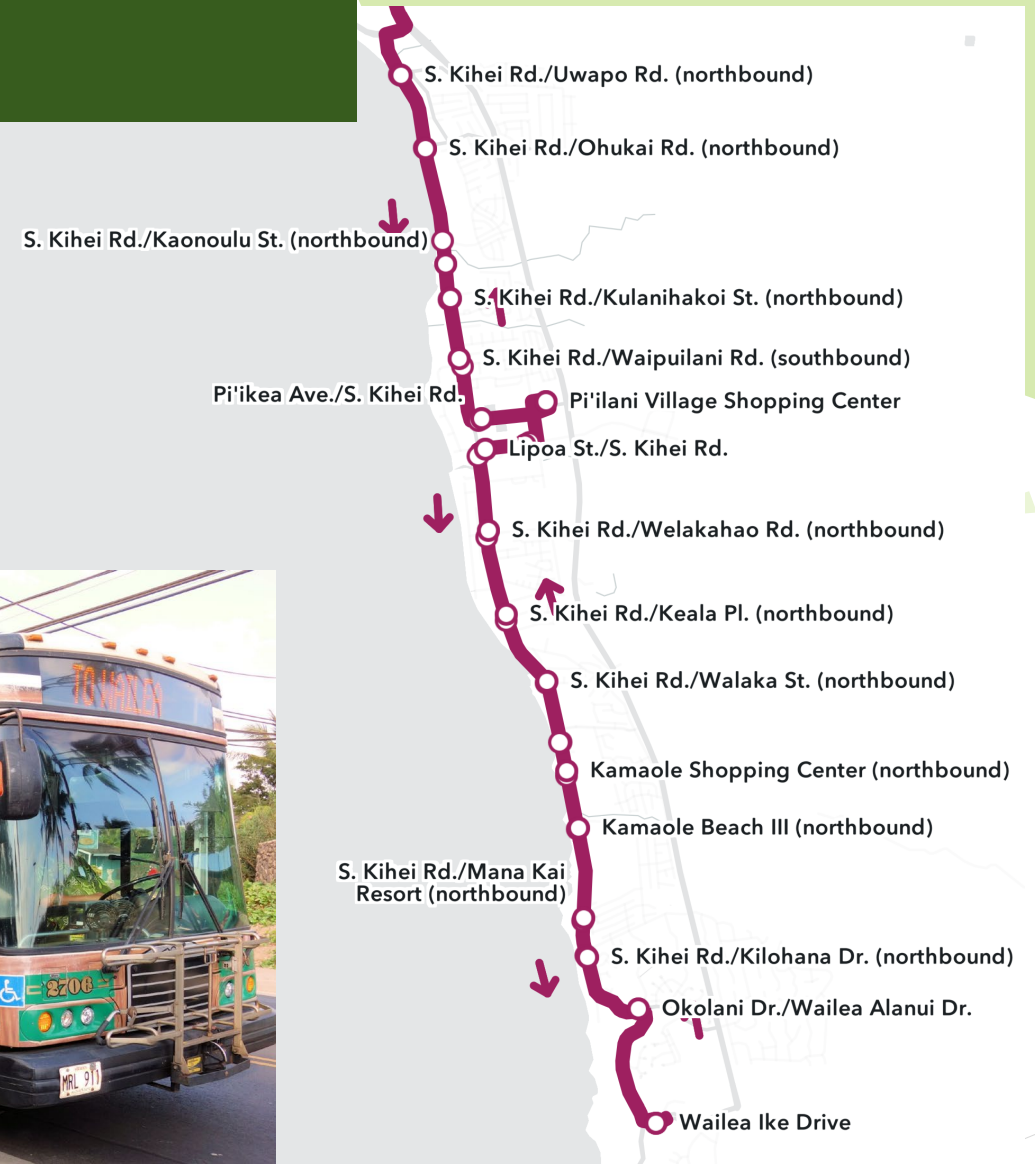


Photo credit: County of Maui



Connectivity and Safer Streets

- **N-S Collector Road:** Complete the roadway between Kaonoulu Street and Auhana Road in 4 phases - Waipuilani to Kulanihakoi planned for 2022.
- **Goals:** remove local trips from Pi'ilani Hwy and provide alternative route to SKR, prone to flooding and tidal effects.
- **Permitting and funding** presents most significant challenges.
- **Cost estimates:** Each phase north of Waipuilani is estimated at \$20M+, Halekuai to Welakahao \$5M+, Welakahao to Auhana anticipated \$15M
- Accommodates **Kihei Bikeway** multiuse path
- **Roundabouts** proposed at all primary intersections



Photo credit: County of Maui



Priority Areas

- **Kihei N-S Collector Road** – construct in phases to connect from Kaonoulu St to Auhana Rd
- **Connection to schools and parks**
Kihei High School
- **Bus Transit Hub at Pi'ikea** – possible location for bus transit hub and infill development
- **Public lands** along the corridor for housing and services
- **Shops at Wailea** – Southern terminus, mobility hub to support visitor and commuter options





Next Steps

- 2020 Apply for \$500k State TOD Planning funds
- 2021 Request for consultant proposals, award contract
- 2021-2023 Conduct South Maui TOD Corridor Study
- 2023 Apply for BUILD grant or similar to construct Kihei North-South Collector Road as multimodal corridor



MAHALO for the Opportunity!

Lauren Armstrong,
MPO

Michele McLean,
Planning

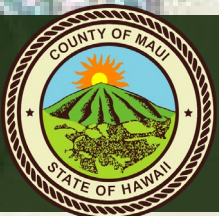
Pam Eaton,
Planning

Linda Munsell,
Housing

David Yamashita,
Parks

Marc Takamori,
Maui Bus

Nolly Yagin,
Public Works



TOD Informational Briefing
September 4, 2020 | 9-11 a.m. via Zoom

